



# 2659 NY-17M GOSHEN, NEW YORK

314,000 SF Development site

Located in the Orange County Industrial Market

---

The information contained herein has been obtained from sources considered to be reliable, but no guarantee of its accuracy is made by this this company In addition, no representation is made respecting zoning, condition of title, dimensions, or any matters of a legal or environmental entail nature. Such matters should be referred to legal counsel for determination. Terms and conditions are subject to change without prior notice. Subject to errors and omissions.



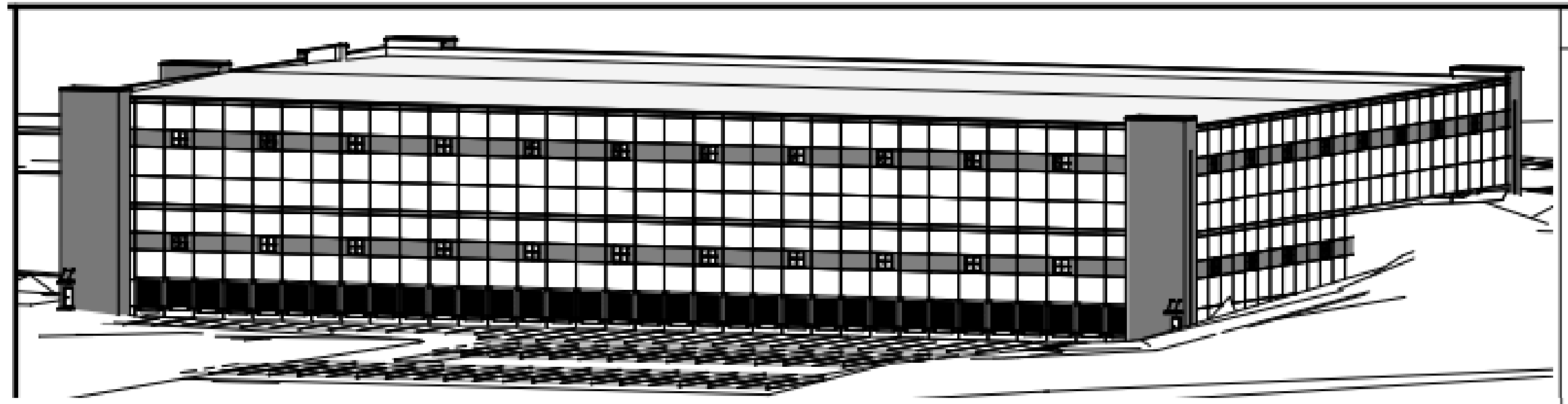
# SPECIFICATIONS

- NY-17M & Rout 17, Exit 123
- 314,000 S/F approved for Industrial use.
- ±20 Acres total Lot
- Divisible into 4 units, with a 2 floor direct loading design
- 32 Loading Docks
- 32' Clear Ceiling Height per level
- 21 Trailer Storage Spaces
- Build to Suit Options per Tenant
- Estimated time to approve, 9 months
- One of the last location left in the Goshen NY 17 M Industrial corridor
- Notable neighboring tenants, Kedem, Milmar Foods, Amy's Kitchen, LegoLand

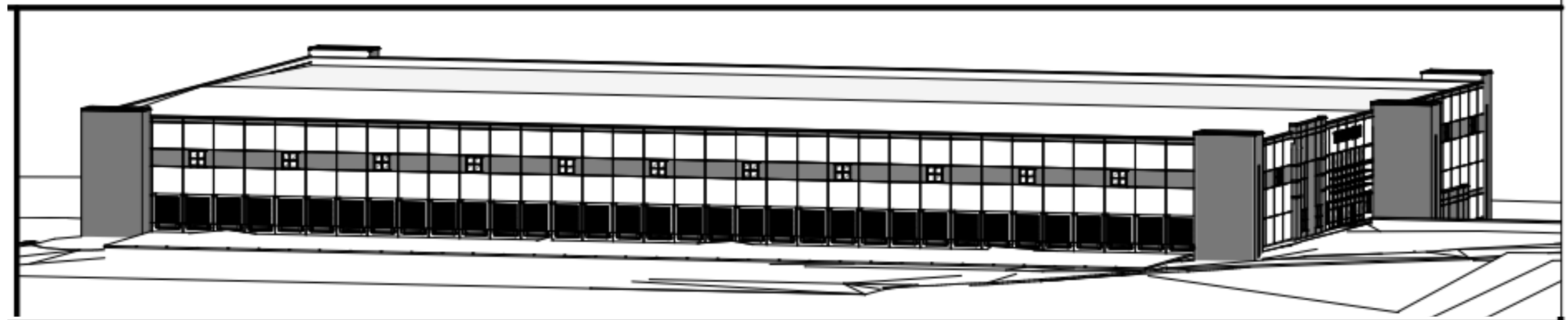


# ELEVATIONS

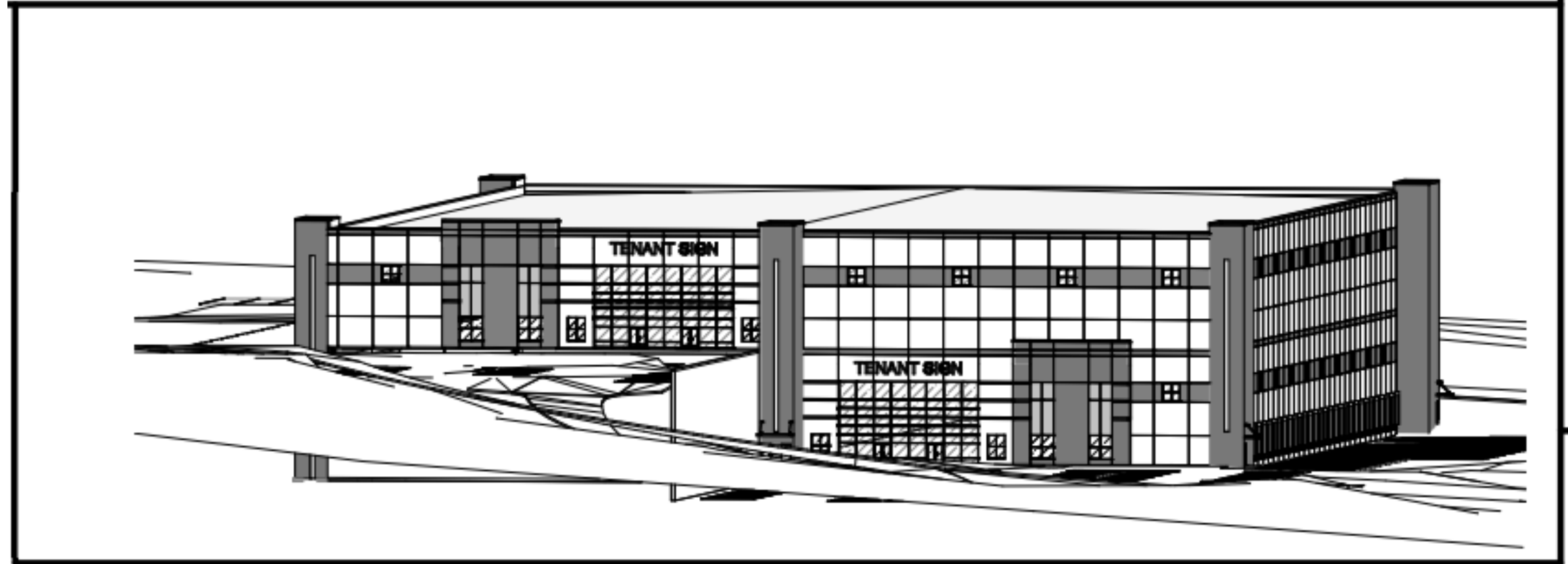
**STREET  
VIEW**



**TENANT  
B VIEW**



**SIDE  
VIEW**



The information contained herein has been obtained from sources considered to be reliable, but no guarantee of its accuracy is made by this this company In addition, no representation is made respecting zoning, condition of title, dimensions, or any matters of a legal or environmental entail nature. Such matters should be referred to legal counsel for determination. Terms and conditions are subject to change without prior notice. Subject to errors and omissions.

# MAP



The information contained herein has been obtained from sources considered to be reliable, but no guarantee of its accuracy is made by this this company In addition, no representation is made respecting zoning, condition of title, dimensions, or any matters of a legal or environmental entail nature. Such matters should be referred to legal counsel for determination. Terms and conditions are subject to change without prior notice. Subject to errors and omissions.

